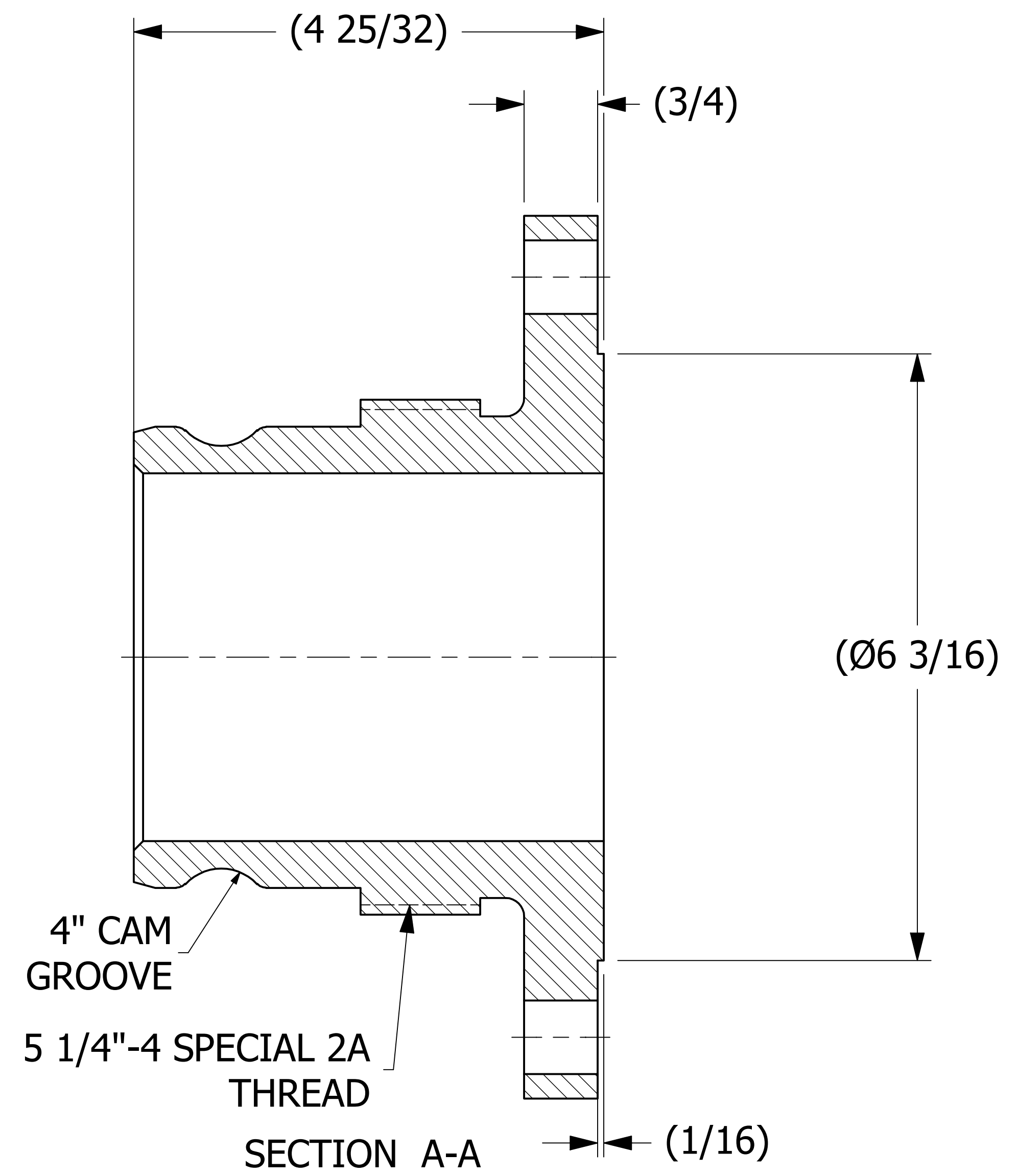
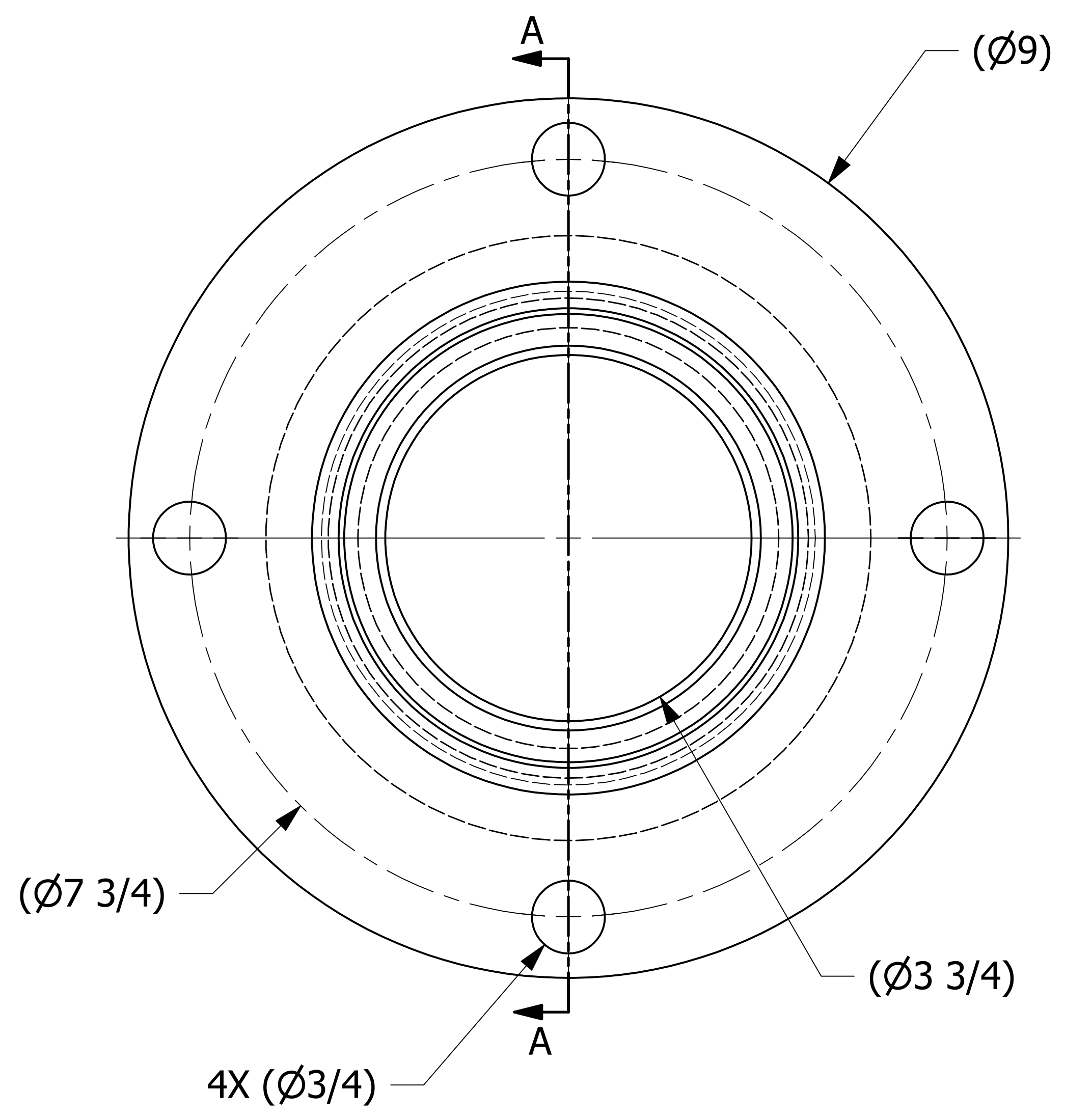


SALES DRAWING

SALES DRAWING



NOTES:

1. QUICK DISCONNECT PROFILE MEETS A-A-59326D.
2. THREADS CONFORM TO FIGURE E18 OF THE AAR TANK CAR MANUAL.
3. PART IS AAR AND DOT APPROVED.

REV	BY	DATE	DESCRIPTION
I	WEB	2-10-16	ADDED OPTIONAL THREAD NOTE
H	WEB	1-24-14	ADDED SHEET 2
G	GS	8-6-13	DRAWING REVERTED BACK TO REV E
F	TAK	4-8-13	REPLACED TE4ITFC W/ TE4IUTFNT IN BOM
E	GDS	3-11-13	REMOVED $\varnothing.086$ HOLES, DIM $\varnothing 4.91$ WAS $\varnothing 5.000$, DIM 2.313 WAS 2.188M UPDATED THREAD NOTE
D	GDS	2-27-13	UPDATED FLANGE FACE FINISH NOTE
C	GDS	2-18-13	ADDED RAISED FACE FINISH NOTE
B	REH	10-18-11	UPDATED HEAT/LOT NOTE
A	REH	4-16-10	ADDED HEAT/LOT NUMBER NOTE

<small>UNLESS OTHERWISE SPECIFIED DIMENSIONAL TOLERANCES</small> FRACTIONAL: $\pm 1/16$ X.XX: $\pm .03$ X.XXX: $\pm .015$ ANGULAR: $\pm 1^\circ$ <small>DEBURR ALL SHARP EDGES. ALL MACHINED SURFACES TO HAVE A 125 RMS FINISH UNLESS NOTED OTHERWISE.</small>	DRAWN BY:	CHL
	CHECKED BY:	ACC
	PROTOTYPE BY:	CHL
	PROTOTYPE DATE:	4/8/2013
	APPROVED FOR PRODUCTION BY:	ACC
<small>THIRD ANGLE PROJECTION</small> 	PRODUCTION DATE:	9/6/2002

SALCO PRODUCTS, INC.

PART NAME: **QUICK CONNECT ADAPTER 4" FLANGED**

MATERIAL: **DUCTILE IRON**

PROJECT #: _____ SHEET #: **1 OF 1** SCALE: **1:1**

DRAWING #: **D17273** PART #: **TE4IUTF**